



# SPI iSTUCCO™ System For Thermal Insulation

Timothy R. Cappel  
Superior Products International II, Inc.  
10835 W 78<sup>th</sup> Street  
Shawnee, Kansas 66214  
USA

[www.spicoatings.com](http://www.spicoatings.com)  
[sales@spicoatings.com](mailto:sales@spicoatings.com)

# With SP Ceramic Stucco There is No Need for Costly Cement Board

Densglass Wall Prior to Float



Densglass is Approved Vapor Barrier



# Smooth Surface Created Using Dry Wall Mud

**Tape & Float to Create Smooth  
Surface**



**Standard Dry Wall Mud Used**



# Application Of SP Ceramic Stucco

**Application of  
SP Ceramic Stucco**



**Application of Approximately  
30 Mils of SP Ceramic Stucco**



# SP Ceramic Stucco

SP Ceramic Stucco has been spray applied and can be formed with a trowel to create different finishes. Smooth, Spanish, etc.





# SP Ceramic Stucco is Trowel On Prior to Completion of iSTUCCO™ System

Wall is Top Coated  
with Super Therm® to  
Complete the  
iSTUCCO™ “Insulating  
System”



# Complete Application of SP Ceramic Stucco



1 Dec 2008

Copyright © 2008 - Superior Products International II, Inc. All rights reserved.

7

# Super Therm<sup>®</sup> Can Be Tinted and Then Brushed, Rolled, or Sprayed



1 Dec 2008

Copyright © 2008 - Superior Products International II, Inc. All rights reserved.

8



# As Shown Here Super Therm<sup>®</sup> Can Be Colored in a Variety of Different Tints



1 Dec 2008

Copyright © 2008 - Superior Products International II, Inc. All rights reserved.

9

# SP Ceramic Stucco Smoother

Traditional Stucco Finish



iSTUCCO™ Insulating System



# Flexible vs. Non-Flexible

**iSTUCCO™ Insulating System**  
“Insulates While Remaining  
Flexible”



**Cracks in the Stucco:**  
**CONSTRUCTION DEFECT**  
**LITIGATION KEEPS SPREADING**



# Non Flexible vs. Flexible

**Cracks With Traditional  
Stucco**



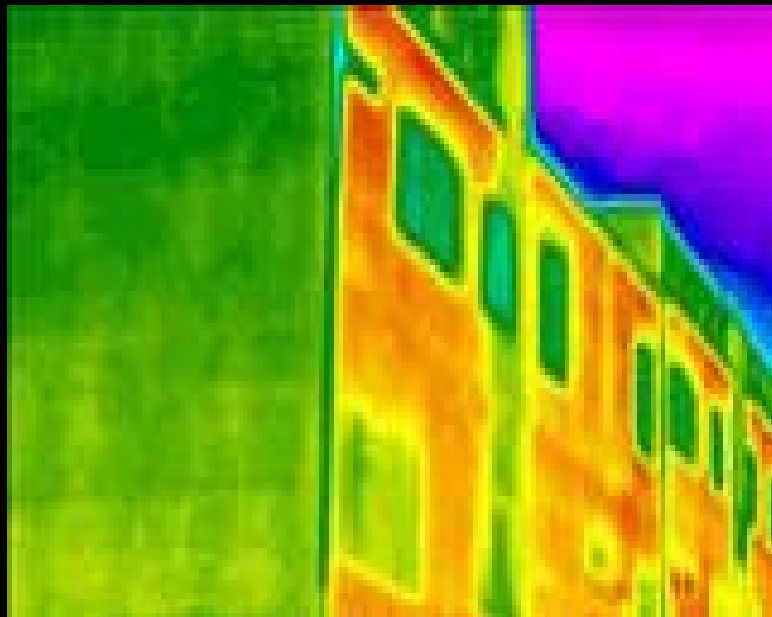
**SP-Ceramic Stucco™ (Reduces  
Thermal Shock)**



# iSTUCCO™ System Difference

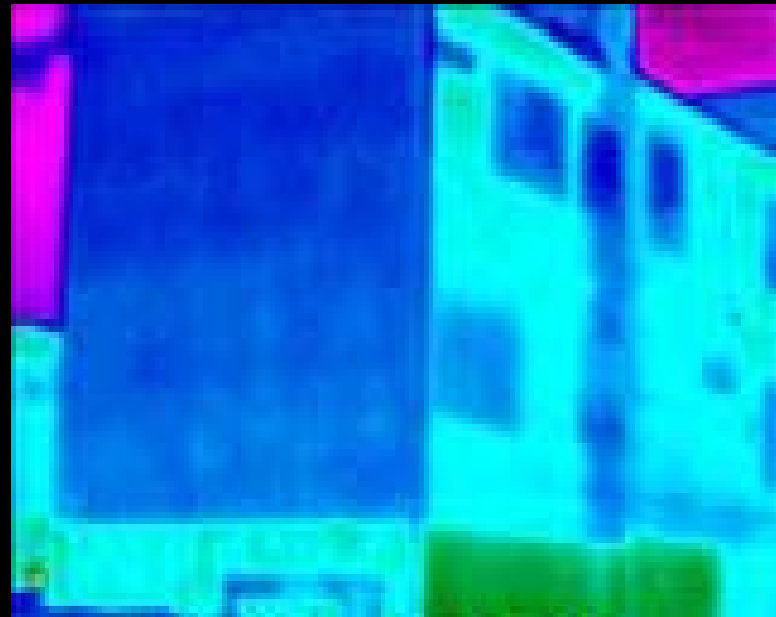
**Thermal Scan Without iSTUCCO™  
Insulating System**

**Interior Temp was 81 degrees F**



**Thermal Scan With iSTUCCO™  
Insulating System**

**Interior Temp Reduced to 68 degrees F**





# Effective Insulation in a Stucco System

## SPI iSTUCCO™ System Works

Remains flexible yet  
durable, deflects heat  
absorption, and can be  
finished in assorted  
architectural colors



# SPI iStucco™ System For Thermal Insulation

**Timothy R. Cappel**  
**Vice President – Business Development, Technology and Legal**  
**Superior Products International II, Inc.**

[www.spicoatings.com](http://www.spicoatings.com)  
[sales@spicoatings.com](mailto:sales@spicoatings.com)



**The Right Coating for Ultimate Protection™**

Copyright© 1990-2008 Superior Products International II, Inc. All Rights Reserved. The SPI Circle Logo and all products denoted with a ™ and ® are trademarks or registered trademarks of Superior Products International II, Inc.